

TURLOCK SUBBASIN MULTIBENEFIT LAND REPURPOSING PROGRAM (MLRP) GROWER-CENTERED SOLUTION TO GROUNDWATER DEMAND REDUCTION

**TURLOCK TREE & VINE EXPO
11 NOVEMBER 2025**

Presentation by:

Mike Tietze, mtietze@formationenv.com
Kristyn Lindhart, klindhart@ekiconsult.com

OUTLINE

Overview of Multibenefit Land Repurposing Program (MLRP; 20 min)

- MLRP, GSA Perspective and Approach (5 min)
- Turlock MLRP, how it works: Project examples & Incentives (15 min)

On-Farm Recharge OFR/MAR (10 mins)

- Turlock 2023 Recharge Field Technical Support

Farmer's Q & A Perspective on MLRP and OFR (30 mins)

- Moderator: Rogell Rogers
 - Jay Fiorini: Turlock MLRP Pilot proponent
 - Christine Gemperle: 2023 Recharge pilot partners
 - Rosie Burroughs: Regenerative Agricultural advocate
 - John Beck: Land Repurposing experience

INTRODUCTIONS

- **Rogell Rogers, CCA, PCA Agronomist**



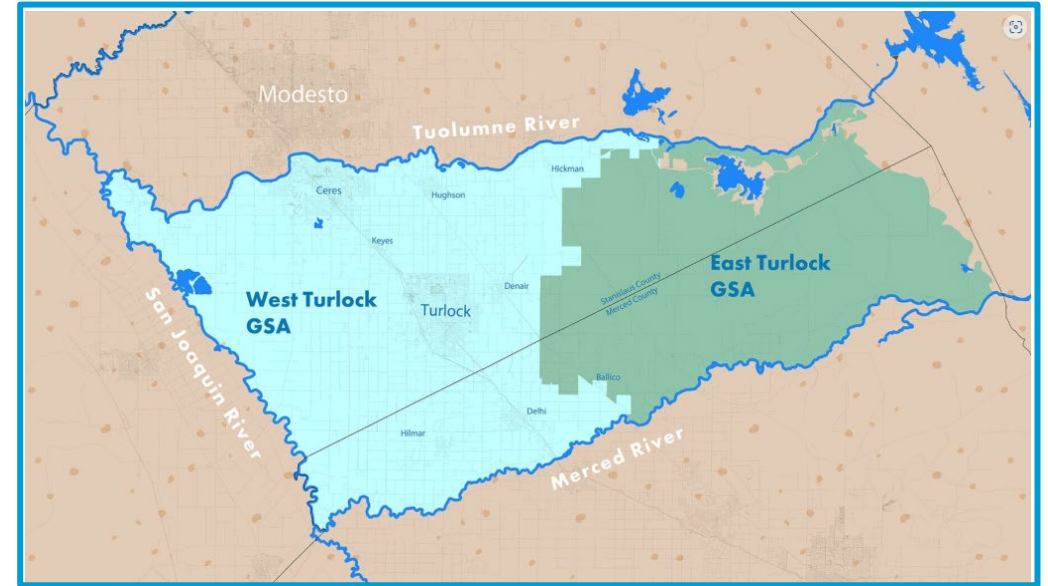
- **Mike Tietze, PG, CHG, CEG**



- **Kristyn Lindhart, Hydrogeologist**



Location of the Project: Turlock Groundwater Subbasin



Project Partners:



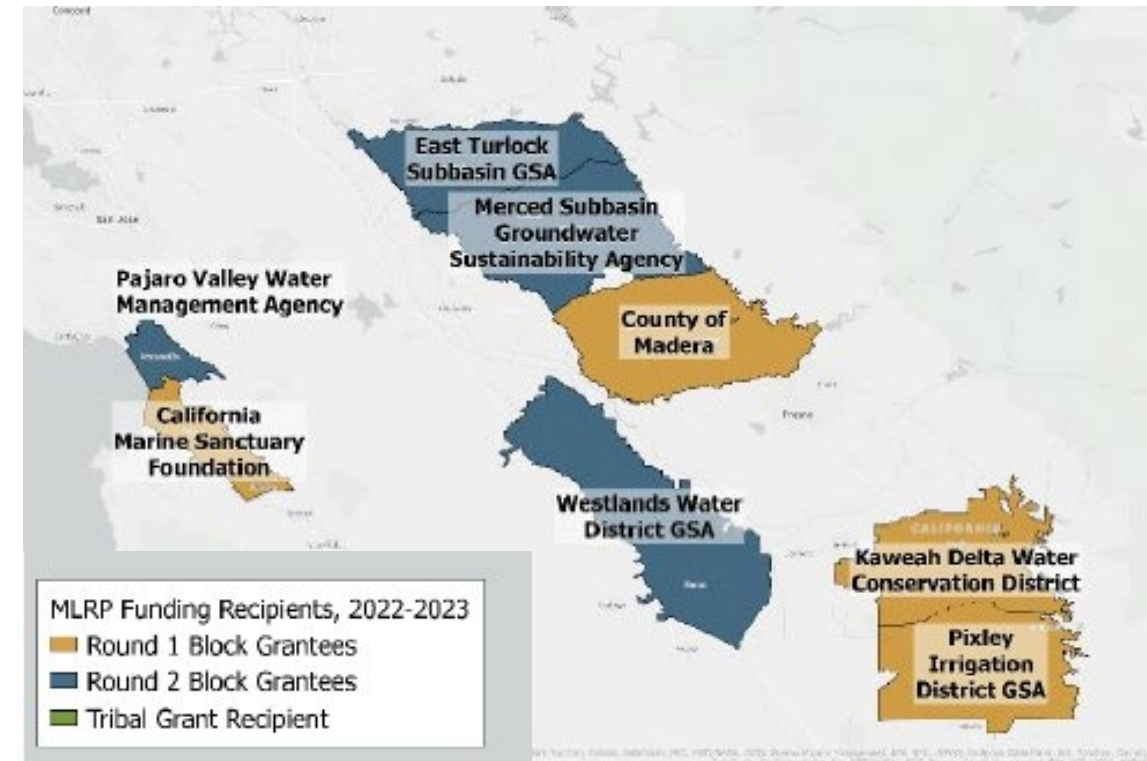
EAST TURLOCK SUBBASIN GROUNDWATER SUSTAINABILITY AGENCY (ETSGSA)



WHAT IS MLRP?

(MULTIBENEFIT LAND REPURPOSING PROGRAM)

- Department of Conservation (DOC) block grant program, aimed to repurpose lands to less water intensive uses, emphasizing multibenefit outcomes, with local control and flexibility
- Goal: Enable voluntary transition of irrigated ag land to multibenefit uses
- Region block grantees (e.g., East Turlock GSA) receive funding (\$8.9M) to design programs tailored to their Groundwater Basin's specific needs



TWO MODELS OF MLRP & PROJECT DEVELOPMENT

Traditional model:

- Discrete projects (often large)
- Developed & implemented by expert teams
- Customized project designs and outcomes
- Variable cost-share and funding
- Stand-alone program

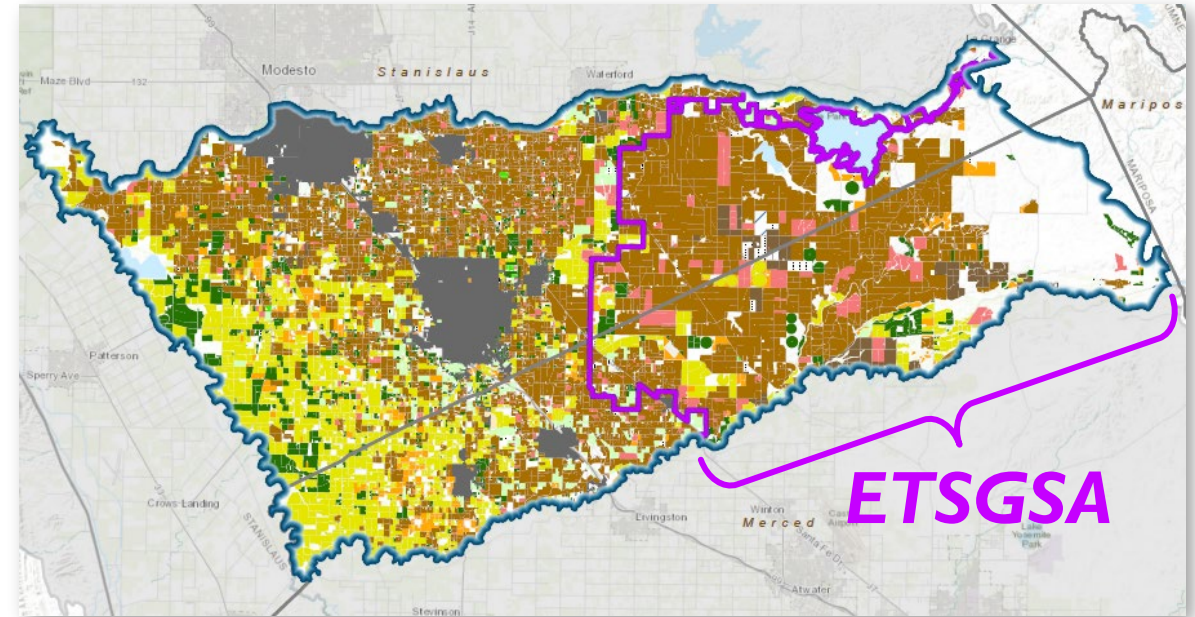
Grower-Centered model:

- Many projects (often small)
- Developed & implemented by landowners
- Use of standardized designs and benefits, as appropriate
- Standardized incentive payment structure
- Integrated with other GSA programs

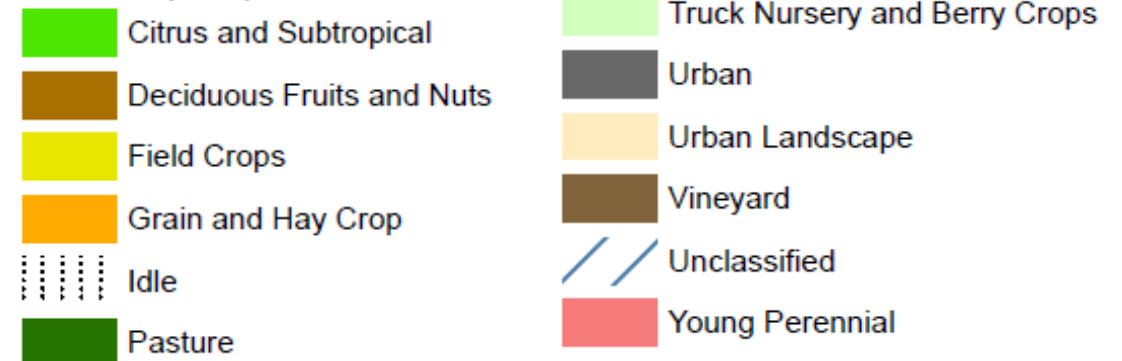
Approach in Turlock!

RATIONALE FOR USE OF A GROWER-CENTERED MLRP MODEL IN THE TURLOCK SUBBASIN

- Growers in ETSGSA area have many of the same challenges and conditions
- Self-implemented land repurposing aligns well with grower's preference for “working lands”
- Scalability and Replicability – enabling participation across many acres to address sustainability challenges



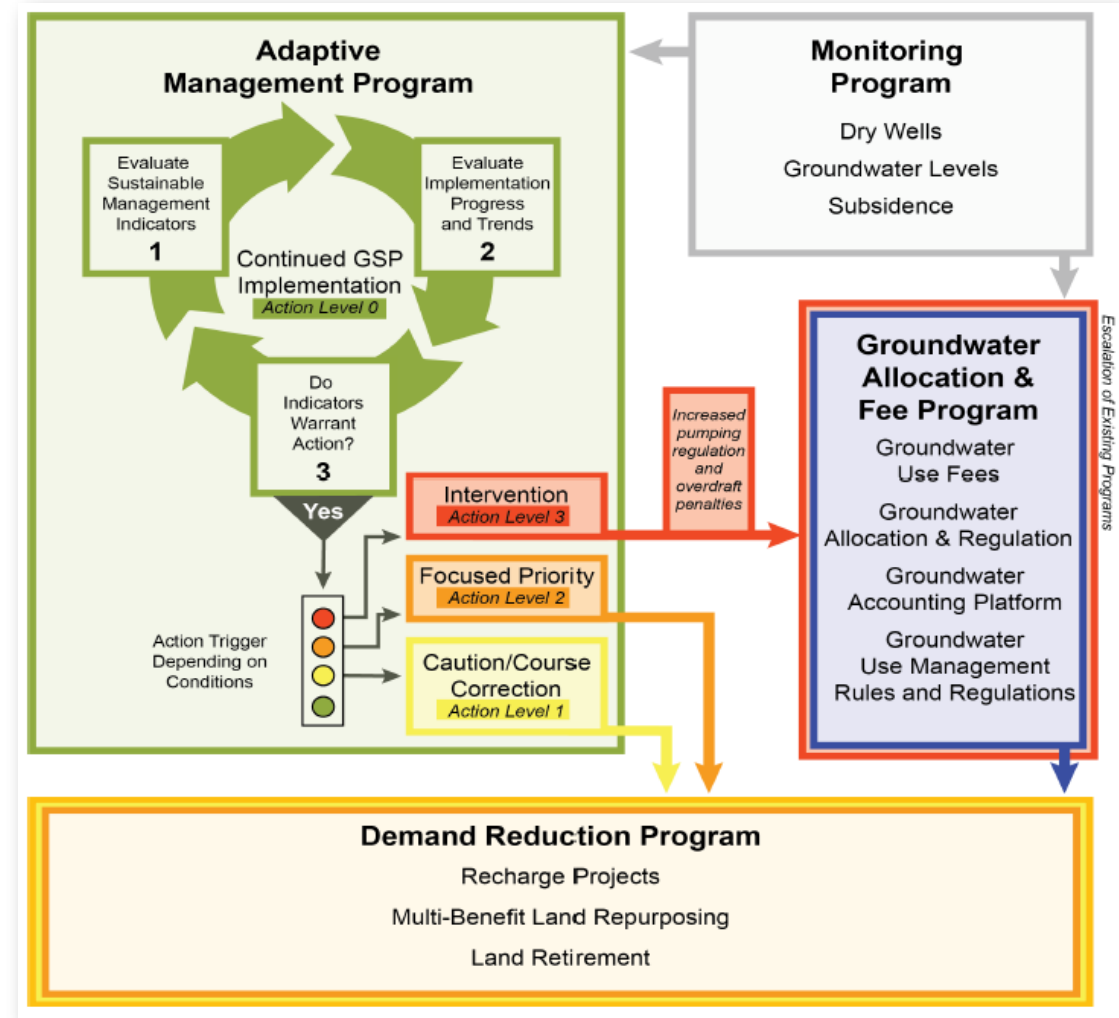
Land Use (2022)



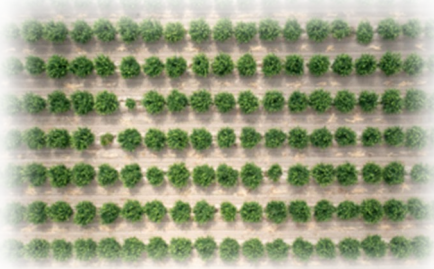
CLOSE TIE-IN WITH OTHER ETSGSA SGMA IMPLEMENTATION EFFORTS

Tying MLRP closely to SGMA

- Builds on the relationships established with growers during GSP development and implementation
- Avoids duplication or confusion with other programs
- Rounds out and compliments the GSA's "Toolbox" to achieve sustainable outcomes
- Gives demand management a financial boost



LAND REPURPOSING PROJECT TYPES IN TURLOCK



Extended Rotational Fallowing



Orchard Swale Rewilding



Agricultural Buffer Zones



Recharge / Retention Ponds

POTENTIAL BENEFITS									
Land Repurposing Alternative	Groundwater Demand Reduction	Groundwater Recharge	Improvements to Habitat	Flood Risk Reduction	Community Benefits	Soil Health Improvement	Economic Diversification	Climate Resilience	Clean Energy Generation
Agricultural Buffer Zones	✓		✓		✓	✓		✓	
Orchard Swale Rewilding	✓		✓	✓		✓		✓	
Extended Rotational Fallowing	✓		✓			✓		✓	
Recharge and Retention Ponds	✓	✓	✓	✓				✓	
Floodplain Reconnection	✓	✓		✓				✓	
Floodflow Dispersal (Flood-MAR)	✓*	✓		✓				✓	
Solar and Agrivoltaics	✓				✓		✓	✓	✓



Floodflow Dispersal (Flood-MAR)



Floodplain Reconnection



Cover Cropping

Other types of projects may be possible / eligible...

ETSGSA INCENTIVE PAYMENT FRAMEWORK

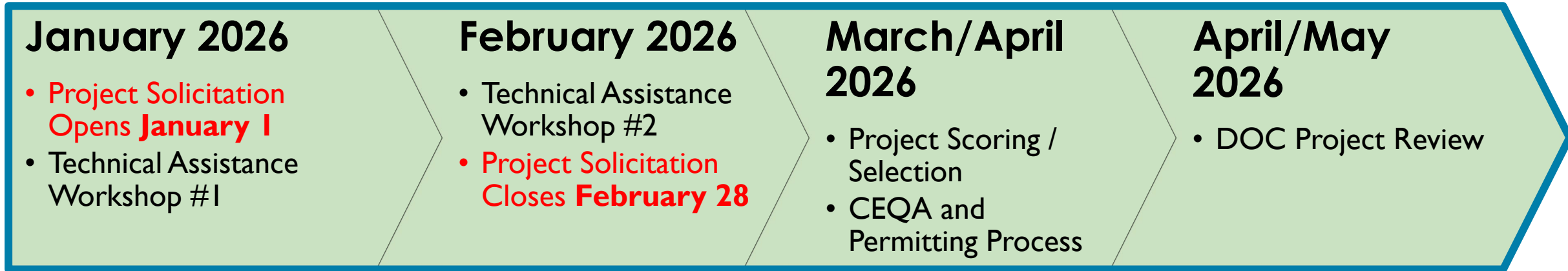
- **Type 1 Incentive Payments:** per-acre, per-year payments for implementation and maintenance of land use changes that transition agricultural field areas from irrigated use to non-irrigated status.

Land Repurposing Practice	ETSGSA Annual Incentive Rate
<i>Incentivized Fallowing Program (IFP)</i>	\$730
Multibenefit Land Repurposing (MLRP)	
Rotational Extended Fallowing	\$890
Orchard Swale Rewilding	\$1,300
Floodplain Reconnection	\$1,450
Flood Flow Spreading	\$1,590
Swale Ponds (operation and maintenance)	\$970
Recharge or Storage Basins (operation and maintenance)	\$1,050

- **Type 2 Incentive Payments:** one-time payments for the initial construction or installation of infrastructure, earthwork and other improvements that are part of a groundwater demand reduction project.

Project Component	Incentive Payment Rates	
	Rate	Unit
Basin or Reservoir Construction	\$5,400.00	\$/AF Capacity
Swale Pond	\$3,700.00	acre
Ranch Road	\$6.50	foot
General Earthwork	\$3.70	cy

PROPOSED SCHEDULE FOR FULL-SCALE MLRP PROJECT SOLICITATION AND REVIEW (UPDATED 11/20/2025)



Technical assistance for Project Proponents will be available!
More details to come soon.

QUESTIONS

Mike Tietze, PG, CHG, CEG

General Manager of ETSGSA

mtietze@formationenv.com

(916) 200-9038

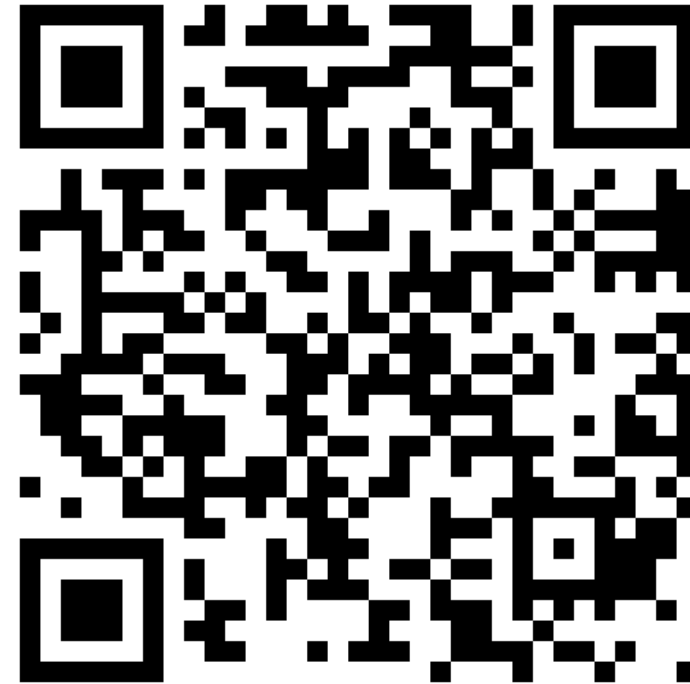
Kristyn Lindhart

MLRP Technical Consultant

klindhart@ekiconsult.com

(530) 341-2848

Turlock Subbasin Multibenefit Land Repurposing Program



<https://turlock-mlrp.netlify.app>